



NEWINGTON
LONDON

3 Bedrooms

House - Mews

Located in London

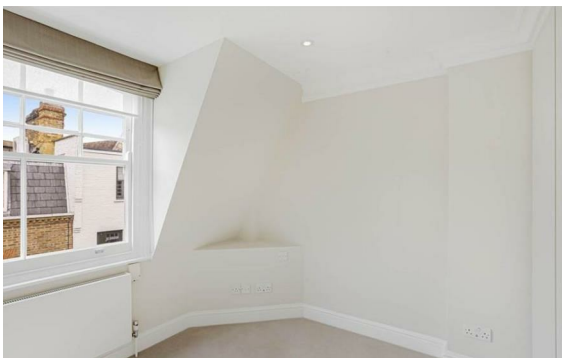
£1,200 Per Month



info@newingtonstates.com

<http://www.newingtonstates.com>

020 7724 2233



A newly refurbished three-bedroom mews house situated on a quiet private street in Paddington. The property is finished to a high standard, well laid out to maximise space and natural light, and benefits from free parking outside.

The house comprises three bedrooms, two bathrooms, a reception room and a fully fitted kitchen. Ideally located moments from Hyde Park and within easy reach of Mayfair, Marylebone and Connaught Village.

EPC rating: D

Energy Efficiency Rating: D

Agents Note: Whilst every care has been taken to prepare these particulars, they are for guidance purposes only. All measurements are approximate and are for general guidance purposes only and whilst every care has been taken to ensure their accuracy, they should not be relied upon and potential buyers/tenants are advised to recheck the measurements.

NEWINGTON LONDON

60 Upper Montagu Street

London

W1H 1SN

020 7724 2233

info@newingtonstates.com

<http://www.newingtonstates.com>